



SENSORY 101



???



???

HOW MANY SENSES ARE THERE ?



???

8!

WE HAVE 8 SENSORY SYSTEMS

- **Visual-sight**
 - Receptors: eyes
- **Auditory-hearing**
 - Receptors: ears
- **Gustatory-taste**
 - Receptors: taste buds
- **Olfactory-smell**
 - Receptors: Nose
- **Interoceptive:**
 - Receptors: internal organs
- **Tactile-touch**
 - Receptors: skin and fascia
- **Vestibular-head position**
 - Receptors: semicircular canals and otoliths
- **Proprioceptive-body position**
 - Receptors: All muscles and joints

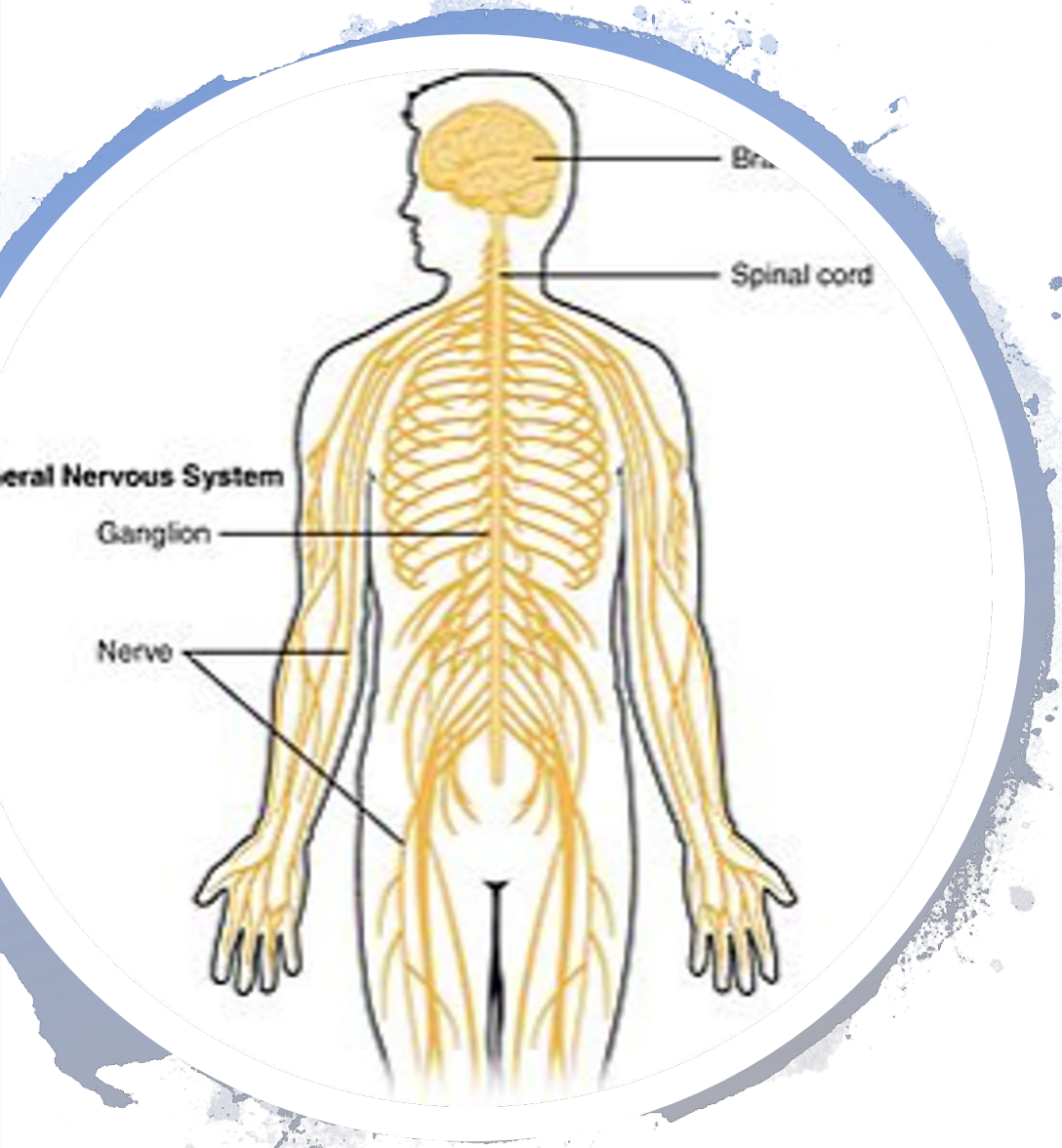
“Sensory Integration”



A function of the brain and body that occurs in all humans across the lifespan.



A theoretical basis and a specific clinical frame of reference for the assessment and treatment of people who have functional disorders in sensory processing.



- Neurological process that organizes sensation from one's own body and from the environment and makes it possible to use the body effectively within the environment (Ayres 1972)
- Sensory information is received through sensory receptors, travels into the CNS, is processed, information sent back for an adaptive response. (Touching a hot stove)
- Outputs:
 - Speech
 - Motor
 - Cognitive
 - Psychosocial
 - SKILL and SAFETY

DYSFUNCTION IN SENSORY INTEGRATION

- If sensory information is not being processed correctly, then you're not able to create an adaptive response.
- If you have to think to process sensory information, THEN SKILLS TAKE A BACKSEAT!

- Harper, 2015

WHEN SENSORY INTEGRATION IS DYSFUNCTIONAL IT CAN PRESENT
IN SEVERAL WAYS IN PRIMARY AGE SCHOOL CHILDREN

YOU MAY
OBSERVE:

FINE MOTOR PRECISION ISSUES

FINE MOTOR INTEGRATION ISSUES

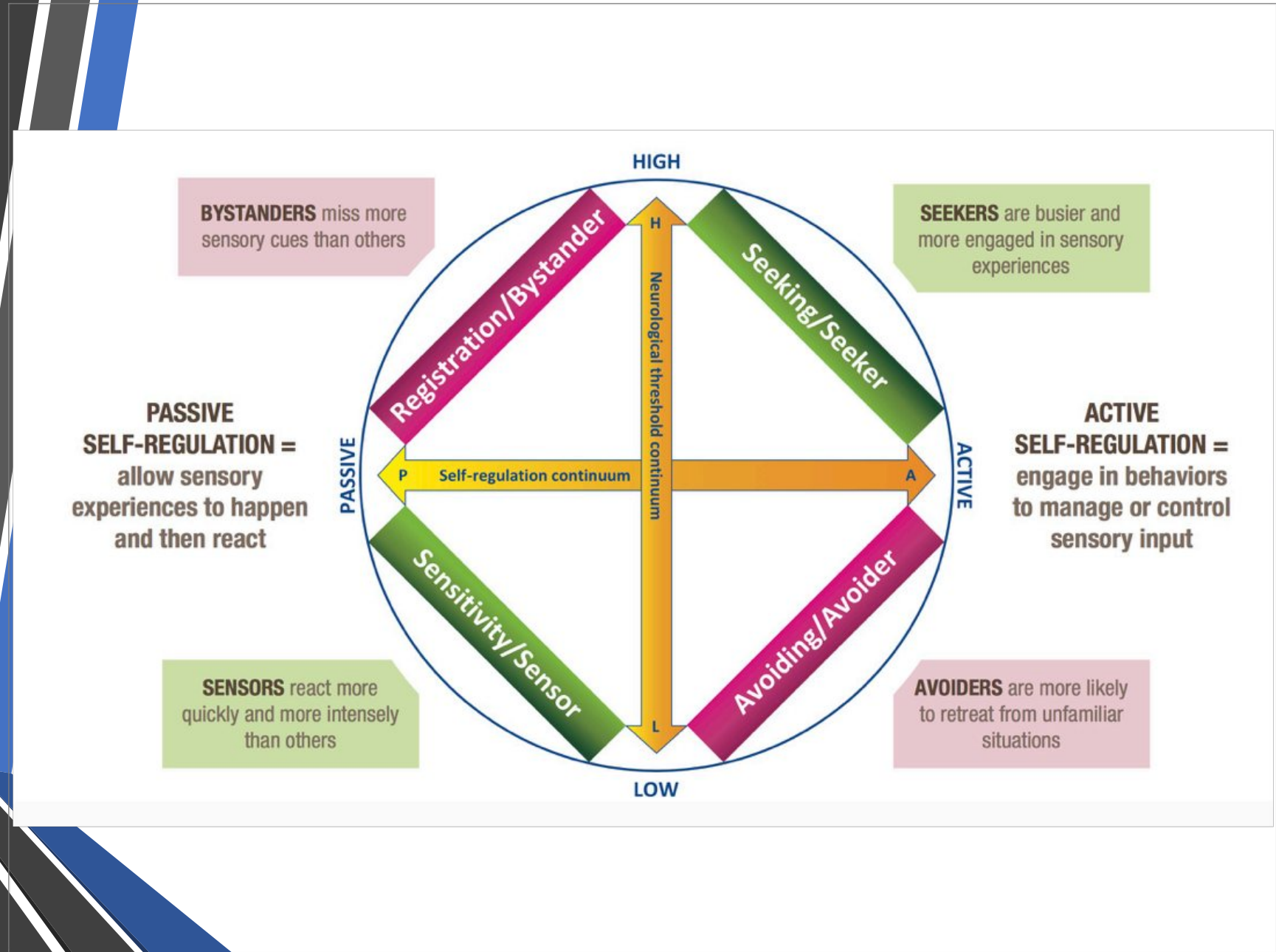
MANUAL DEXTERITY DIFFICULTY

UPPER LIMB COORDINATION ISSUES

BILATERAL COORDINATION ISSUES

BALANCE

Determine the Arousal State/Threshold



REFERENCES

Dunn W (1999). Sensory Profile Manual. NCS Pearson: USA

Harper, J. (2015). *Practical Sense in Sensory Integration Part 1* [PDF document].

Retrieved from: