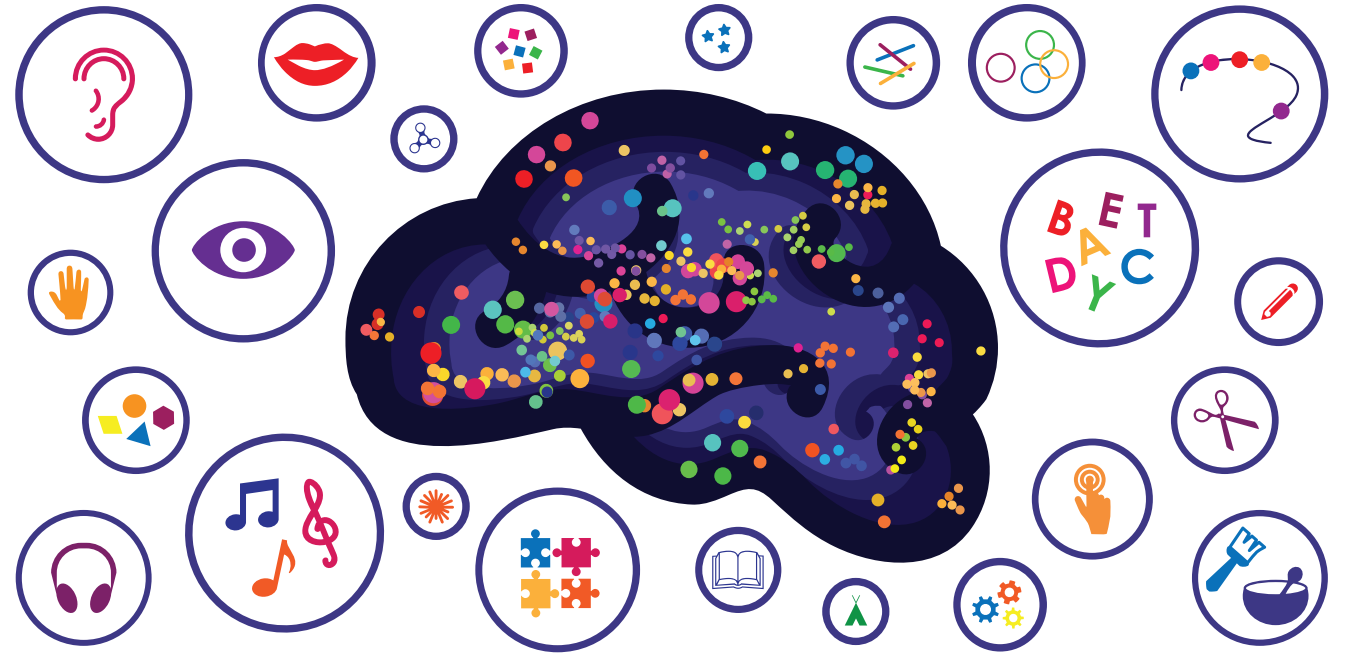
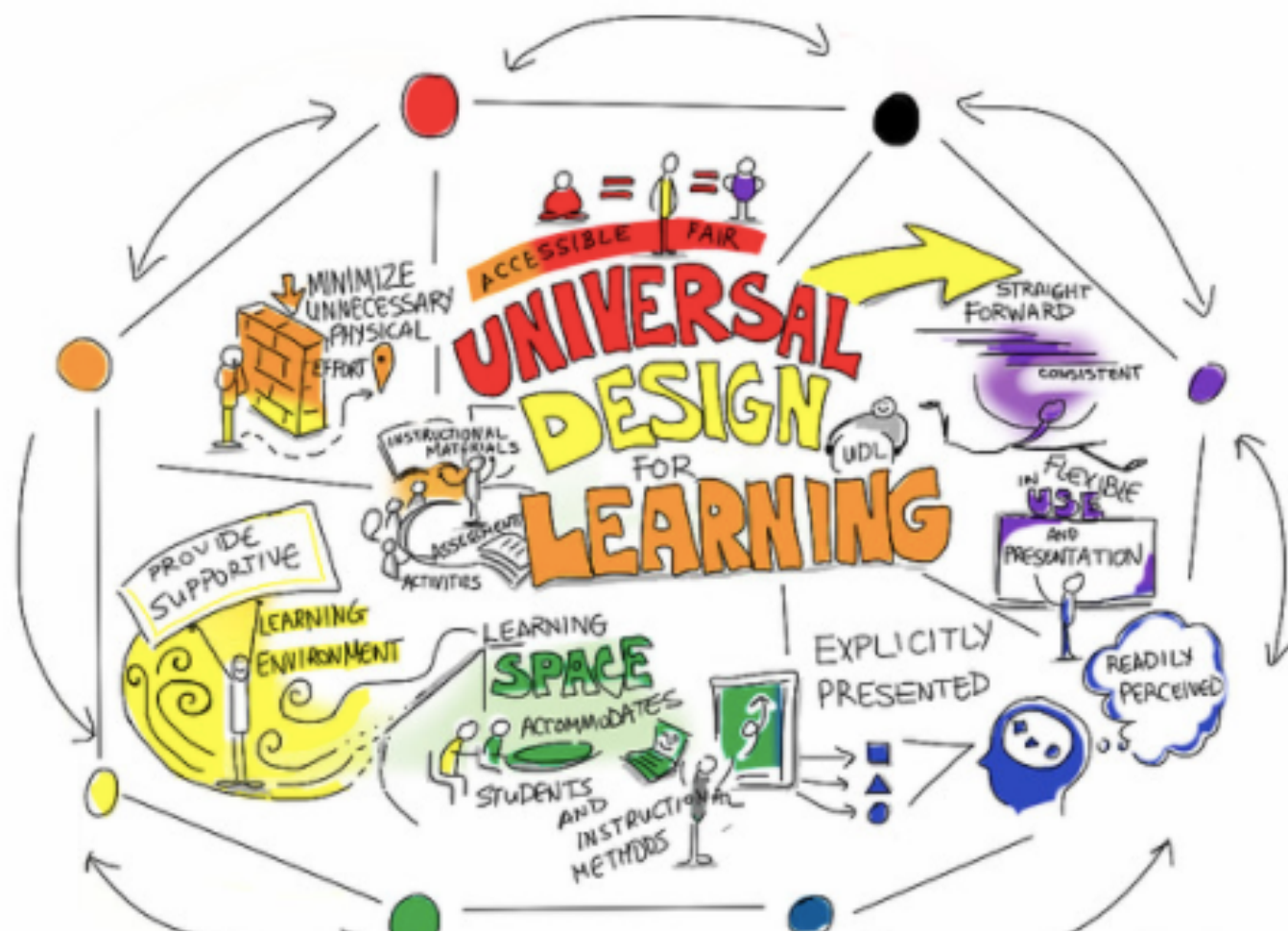




UNIVERSAL DESIGN FOR  
LEARNING

*Universal Design for Learning (UDL)* is an educational framework based on research in the learning sciences, including cognitive neuroscience, that guides the development of flexible learning environments and learning spaces that can accommodate individual learning differences.





This infographic provides a visual representation of what Universal Design for Learning (UDL) is.

It incorporates key UDL components such as accommodating learning spaces, a supportive learning environment and explicitly presented materials.

UDL has many components that work together to create the best learning environment for all students.

# UDL

---

## UDL is...

- ✓ A way to optimize teaching to effectively instruct a diverse group of learners.
- ✓ Based on insights from the science of how people learn.
- ✓ Flexible in how students access material, engage with it and show what they know.

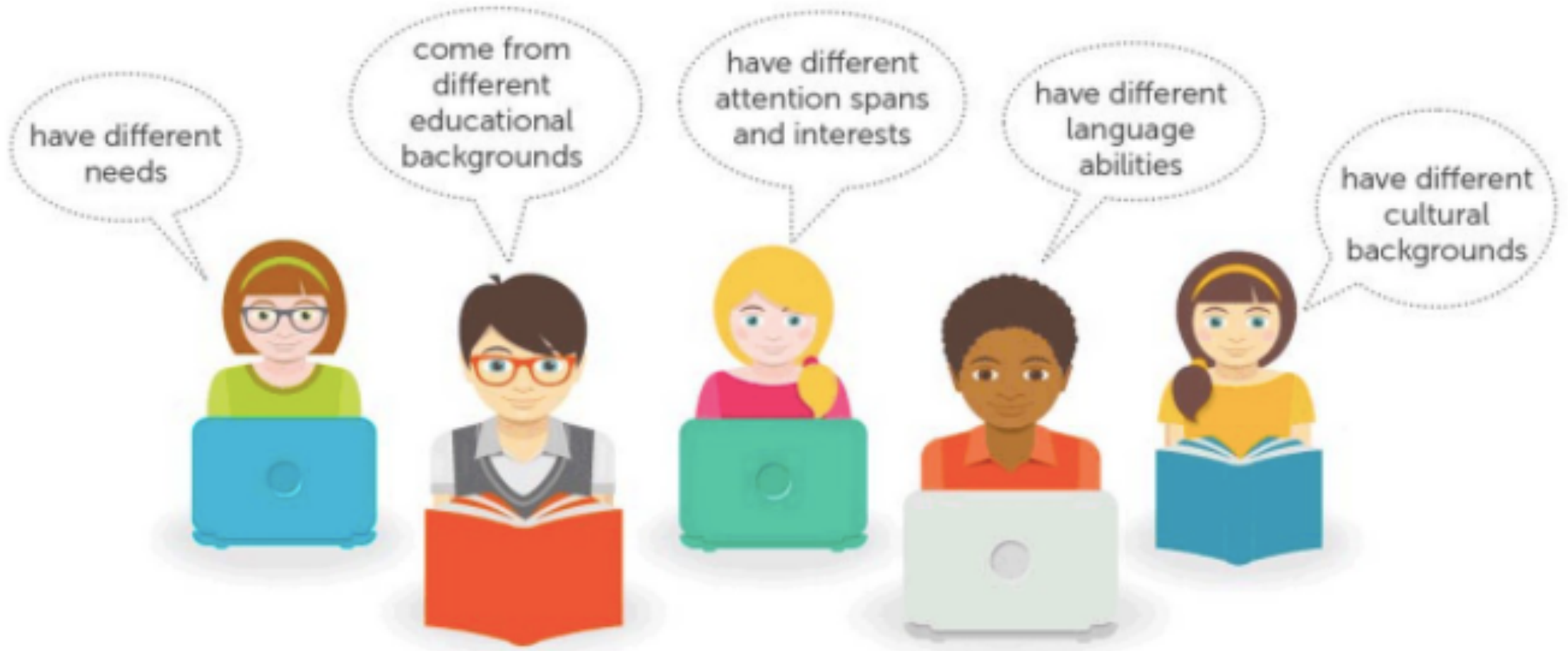
## UDL is not...

- ✓ A curriculum or technology platform.
- ✓ One method of teaching all students. A variety of methods are used to give all students an equal opportunity to succeed.
- ✓ An “us” vs. “them” resource. UDL benefits all students, not just those who struggle.

WHY IS UNIVERSAL  
DESIGN FOR  
LEARNING  
IMPORTANT?

BECAUSE....

# Students can...



Instead of thinking that something needs to change about the student, UDL looks at the *learning environment*.

The learning environment can include barriers to learning, like the design of the curricular goals, assessments, methods and materials. In this way, the learning environment itself can be “abled” or “dis-abled.”



Next, let's explore the  
Environment/Sensory  
Component of UDL

